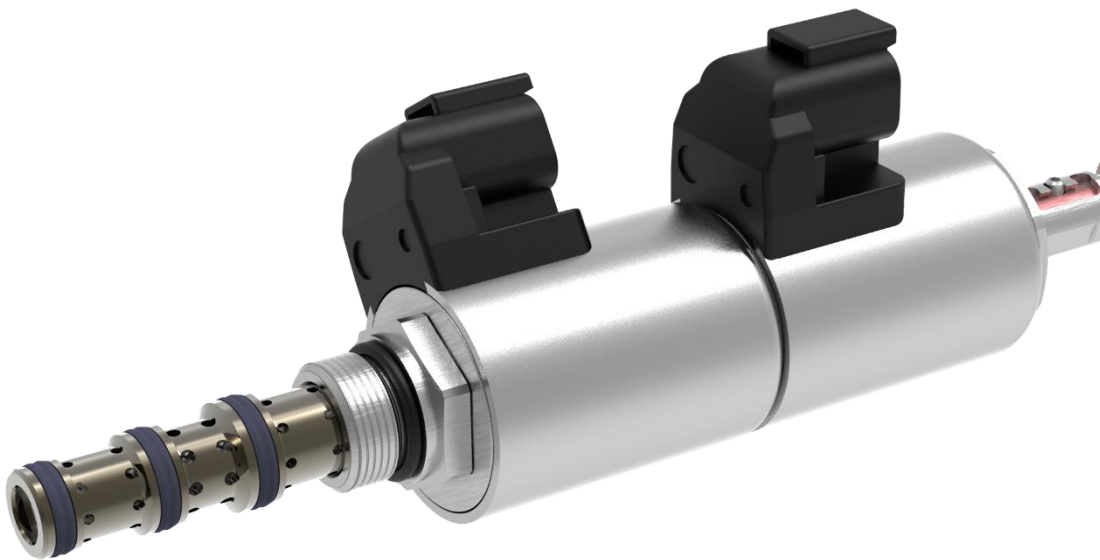


We make your products better. **Worldwide.**



Beyond the limits of performance.

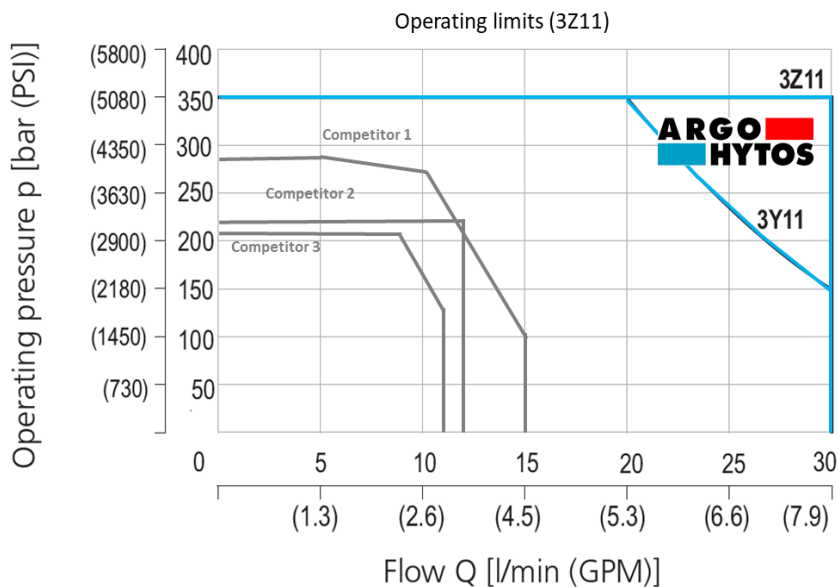
SD2E-A4/H3



Introducing the new **SD2E-A4/H3** three-position screw-in cartridge directional control valve, which stands out due to unique features and superior hydraulic performance. At first glance, it is distinguished from other Argo-Hytos screw-in cartridge directional control valves by dual solenoids located in one control system. Currently, the Z11 and Y11 four-way spool valves are available for the most common applications. The valve can be installed in a standard 3/4-16 UNF (SAE 08) four-way chamber, ensuring valve interchangeability across the hydraulic market.

BEYOND THE STANDARD LIMITS

Compared to competitors, the new 4/3 solenoid operated, screw-in cartridge directional control valve is exceptional because of its **extremely high hydraulic performance**. The valve is capable of controlling the direction of fluid flow up to a flow rate of **30 l/min (7,9 GPM)**, which is almost **double that of its competitors**. The maximum pressures in channels 2, 3, 4 can reach up to **350 bar (5 080 PSI)**, and up to **250 bar (3 625 PSI)** in channel 1, values which are not achieved by most competitive valves. The valve's **10 million cycle life-time**, tested on a proof-of-concept basis, confirms the **valves's suitability for the most demanding mobile applications**.

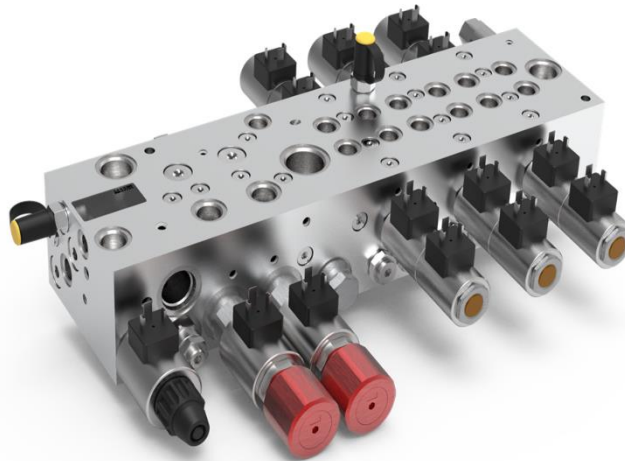


Thanks to the sophisticated design and simulations performed, the valve has a higher flow rate compared to the competition. **Pressure drop at 10 l/min (2,64 GPM) is 3 bar (43,51 PSI) at 30 l/min (7,92 GPM) from 10 to 20 bar (145 – 290 PSI) depending on spool type and flow direction.**

CETOP vs. CARTRIDGE

The new **SD2E-A4/H3** cartridge **4/3 directional control valve** brings a number of significant advantages compared to the RPE3-04 modular 4/3 CETOP directional control valve. The block designed for cartridge valves is

dimensionally smaller than the block designed for valves with mounting pattern ISO 4401, DIN 24340 (CETOP 02). **The smaller size of the SD2E-A4/H3 screw-in cartridge valve is especially appreciated by designers of mobile machines who have limited space for additional sub-components.** Customers will also appreciate the valve's surface protection, zinc coating with a **520h endurance in the ISO 9227** salt spray test, a surface protection suitable for demanding mobile applications.



Additional benefits

- Emergency manual control with M7 marking, which allows simple locking of the spool in any extreme position in the case of power failure
- The choice of either FPM or HNBR seals when configuring the valve
- Universal coil allowing variability of all available types of connectors
- Hardened precision manufactured parts ensure minimal valve leakage

[FIND OUT MORE](#)

Your

ARGO-HYTOS Product Management FMC



[How can we help you?](#)

ARGO-HYTOS Group AG

Neuhofstrasse 1

6340 Baar

Switzerland

socialmedia@argo-hytos.com