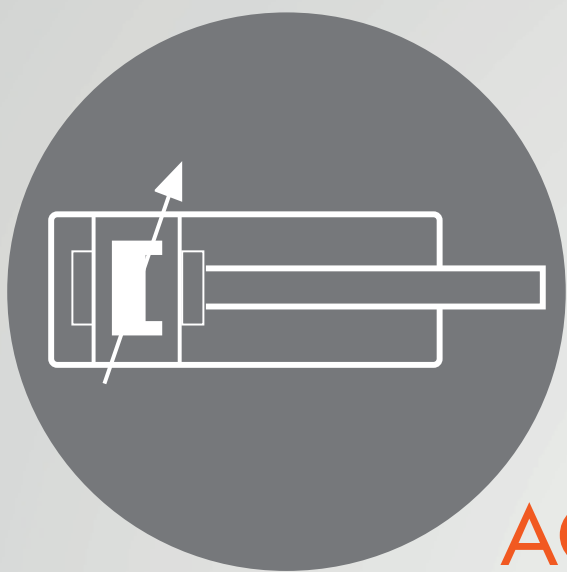


# STAINLESS STEEL

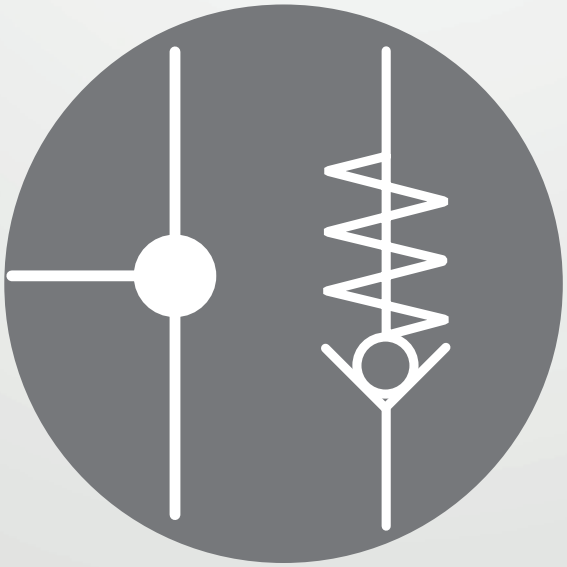


ACTUATORS



PROCESS  
VALVES

# INOX



FITTINGS AND  
ACCESSORIES

# ACTUATORS

**ISO 6432**

Ø 16 - 25 mm

↔ 500 mm

AISI 304

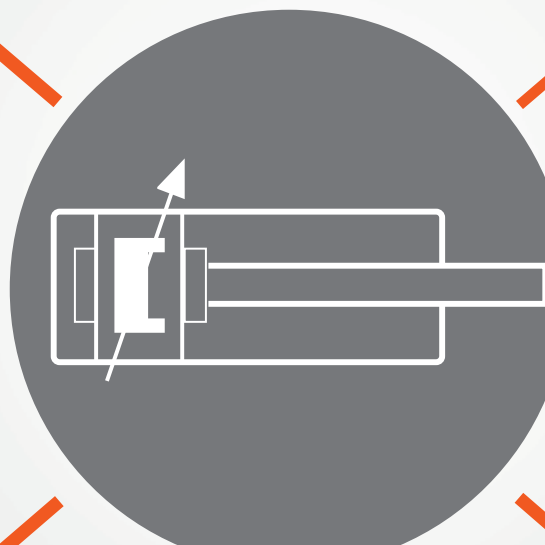


**ISO 15552**

Ø 32 - 125mm

↔ 500 mm

AISI 304



**RNDC**

Ø 32-63 mm

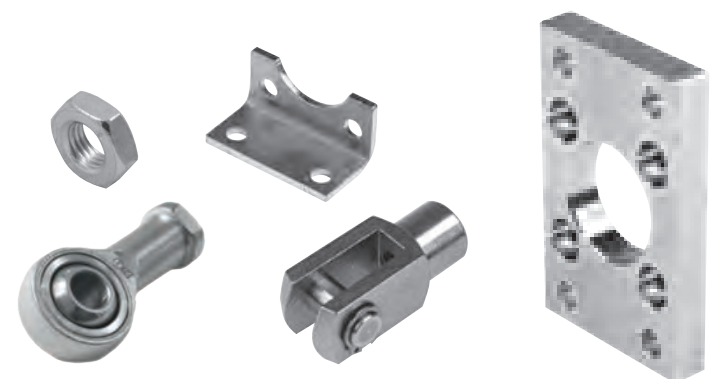
↔ 500 mm

AISI 304



**INSTALLATION  
ACCESSORIES**

AISI 316



# FITTINGS AND ACCESSORIES

## PUSH-IN FITTINGS XR

M5 - G1/2  
Ø4 - Ø12

AISI 316L



## STANDARD FITTINGS XA

G1/8 - G1/2

AISI 316L



## QUICK FITTINGS XC

G1/8 - G3/8  
6/4 - 10/8

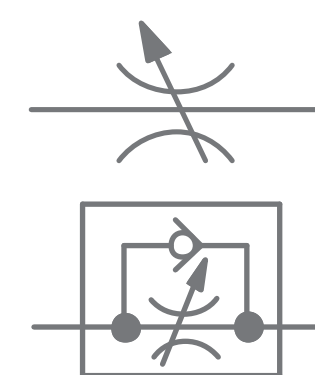
AISI 316L



## ACCESSORIES

M5 - G3/8  
Ø4 - Ø10

AISI 316L

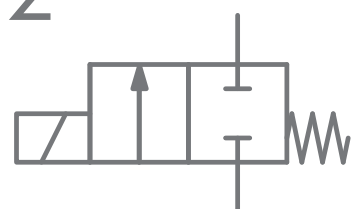


# PROCESS VALVES

AISI 303



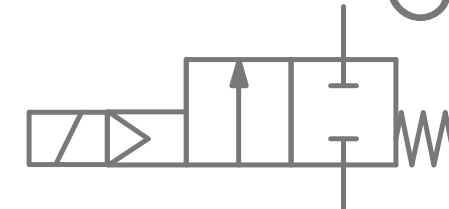
G1/8 - G1/2



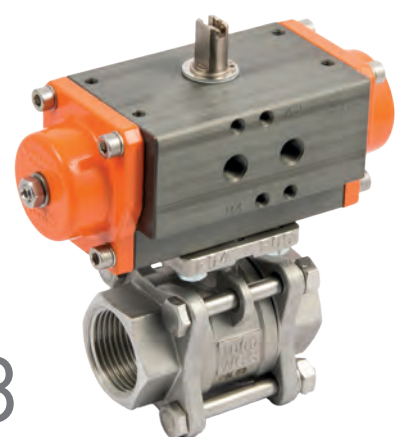
AISI 316L



G1/4 - G2

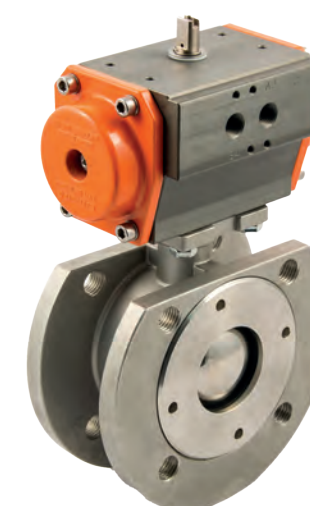


AISI 316



G1/4 - G3

AISI 316



DN 15 -  
DN 50