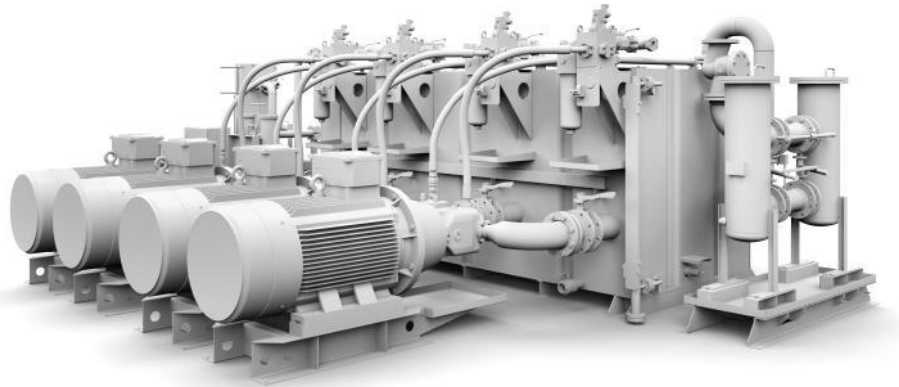


Time is Money: Engineering for large power units reduced to five days

Time and cost savings through standardization and proven designs



ABMAXX: modular system for large power units

With ABMAXX, Bosch Rexroth is the first hydraulics manufacturer to offer a modular system for large power units. ABMAXX accelerates the engineering and commissioning of large hydraulic power units for new construction or the modernization of plants. The hydraulics specialists are able to create a quote complete with a hydraulic circuit diagram, a parts list, a 3D model and dimensions all within a maximum of five working days. As such, system manufacturers and end users can reduce engineering lead times alone by 80%. The pre-configured ABMAXX modules are composed of highly available standard components. The modular approach reduces costs by up to 35 percent and increases operational availability.

Bosch Rexroth is able to speed up the whole engineering and commissioning process thanks to its modular approach, which provides the benefits of standardization yet also ensures a sufficient level of variation for coming up with application-specific solutions. As such, Rexroth's engineers have defined five modules: tank, motor pumps, pump block, circulation unit with filtration and cooling, and return flow filter module. Each module is based on proven

constructions with a tried-and-tested design and features highly available standard components. The modules are designed to work equally well with mineral oil as with special media often used in metallurgy such as HFC and HFD media.

ABMAXX initially covers tank sizes ranging from 2,000 to 12,500 l. With its three pressure ratings, namely 160, 210 and 315 bar, the concept satisfies the trend for higher operating pressures, thus ensuring it will be fit for the future. Achievable flows currently range from 345 l/min to 2,160 l/min. The pump block and the circulation unit are fundamentally equipped with stand-by units in order to guarantee maximum availability. Tried-and-tested safety controls help designers to comply with corresponding safety regulations and documentation requirements in line with standards.

Standardization reduces system costs and simplifies maintenance. The modules have been designed so as to ensure optimum component accessibility. What's more, standardization reduces the required maintenance and servicing over the entire life cycle as the standard components used are available at short notice and will also be part of the product range over the long term. The maintenance-friendly design makes it easier to replace components.

ABMAXX shortens the engineering time for complete power units as well as individual modules. In terms of their functions and performance levels, the power units are able to meet the requirements of metallurgical plants, steelworks and rolling mills as well as large-scale presses and other industrial applications right through to large-scale projects.

As one of the world's leading suppliers of drive and control technologies, Bosch Rexroth ensures efficient, powerful and safe movement in machines and systems of any size. The company bundles global application experience in the market segments of Mobile Applications, Machinery Applications and Engineering, and Factory Automation. With its intelligent components, customized system solutions and services, Bosch Rexroth is creating the necessary environment for fully connected applications. Bosch Rexroth offers its customers hydraulics, electric drive and control technology, gear technology and linear motion and assembly technology, including software and interfaces to the Internet of Things. With

locations in over 80 countries, more than 32,300 associates generated sales revenue of roughly 6.2 billion euros in 2018.

To learn more, please visit www.boschrexroth.com

The Bosch Group is a leading global supplier of technology and services. It employs roughly 410,000 associates worldwide (as of December 31, 2018). The company generated sales of 78.5 billion euros in 2018. Its operations are divided into four business sectors: Mobility Solutions, Industrial Technology, Consumer Goods, and Energy and Building Technology. As a leading IoT company, Bosch offers innovative solutions for smart homes, smart cities, connected mobility, and connected manufacturing. It uses its expertise in sensor technology, software, and services, as well as its own IoT cloud, to offer its customers connected, cross-domain solutions from a single source. The Bosch Group's strategic objective is to deliver innovations for a connected life. Bosch improves quality of life worldwide with products and services that are innovative and spark enthusiasm. In short, Bosch creates technology that is "Invented for life." The Bosch Group comprises Robert Bosch GmbH and its roughly 460 subsidiary and regional companies in over 60 countries. Including sales and service partners, Bosch's global manufacturing, engineering, and sales network covers nearly every country in the world. The basis for the company's future growth is its innovative strength. At nearly 130 locations across the globe, Bosch employs some 68,700 associates in research and development.

Additional information is available online at www.bosch.com, www.iot.bosch.com, www.bosch-press.com, www.twitter.com/BoschPresse.

Contact for journalists:
Bosch Rexroth AG
Manuela Kessler
97816 Lohr a. Main, Germany
Tel.: +49 9352 18-4145